

PLEASE PASS
TO HOMEOWNER ONCE
INSTALLATION IS COMPLETE



CONSERVAGLASS™

by ultraframe

Installation & maintenance guidelines
Version 3 | AUGUST 2016

GUIDANCE FOR INSTALLERS

Receipt of sealed unit

CONSERVAGLASS sealed units are delivered with special labels affixed to the coated surface. They should be carefully removed at the first clean down.

Storage

- CONSERVAGLASS sealed units must be stored in a clean, dry, ventilated area, protected from any extreme variations in temperature and humidity.
- Keep the product away from confined areas where there is an obvious presence of silicone or sealant vapours.

Handling/Equipment

- Avoid all contact with sharp, metal or abrasive objects which may scratch the coating (e.g. belt buckles, Stanley knives, razors).
- Avoid contamination from hands which have been in direct contact with silicone.

Assembly into the frame

- Always position the coated surface facing towards the exterior. The coated face can be identified by a label with 'Bioclean' or 'Pilkington Activ' printed on.
- Avoid all contact with linseed oil and silicones during assembly and installation (including setting blocks, grease or silicone sealants, adhesives, glues, lubricants). Glazing tapes used in timber frames should not be capped with silicone.

Gaskets

- Glazing gaskets must never be lubricated with silicone oil.

Sealants

Silicone sealants must never be used.

- Where possible avoid any use of polymerisable mastics as they release a number of oils which diminish the efficiency of CONSERVAGLASS especially around the edges.
- Avoid all use of linseed oil mastics or putties.

On-site installation

Protection: If any other works are taking place in the vicinity of CONSERVAGLASS then protect the glass with a clean sheet to prevent any splashes or staining from aggressive compounds (paint, varnish, glue, sealant, cement, plaster, mortar, etc). This will also protect the product from abrasive or hot particles (grinding or welding sparks, etc).

Sealants: The use of an MS Polymer based sealant is recommended. Ultraframe supply and recommend Rotabond 2000.

Lead flashing: Where lead flashing is adjacent to the glass, staining can occur from carbonate run-off. This should be minimised by using a suitable patination product as soon as the lead flashing is fitted. Alternatively, specify Ultraframe Conservafash, the BBA approved alternative to lead. Ultraframe also recommend Rotabond 2000 or similar approved MS Polymer sealant as rainwater run off from non-approved sealants can affect the self cleaning glass.

First clean-down: Where polymerisable sealants have been used wait until the full polymerisation has occurred before cleaning the CONSERVAGLASS coating. After carefully peeling off the special label, start with a rinse down of the coated face and complete with a normal maintenance routine (see across).

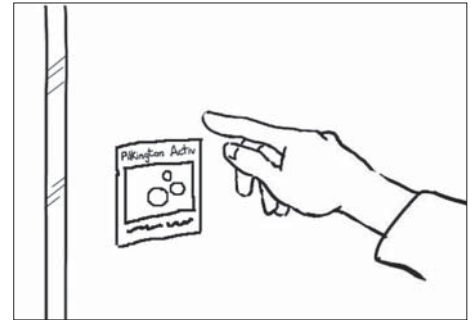
What to do...



Use clean, dry, soft safety gloves. Avoid those with rubber or silicone grips.



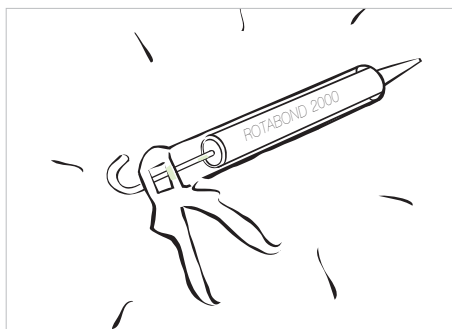
Hand held or machine suckers must be in a good condition, clean and completely silicone-free. In order to ensure their cleanliness, protective covers are available.



Carefully peel off the Pilkington Activ (attached to the inside face of the sealed unit) label.



Wait at least a week before first clean down. The use of a soft, clean sponge or cloth is recommended.



A MS Polymer sealant must be used- Ultraframe supply and recommend Rotabond 2000.

Installers/Fitters

For further information and up to the minute updates please check out the Pilkington Website.

GUIDANCE FOR HOMEOWNERS

Introduction

Conservaglass is a self cleaning glass which has been specially designed to remain cleaner for longer than conventional glass. A transparent coating on the external surface of the glass harnesses the power of ultra-violet rays and rain (or water) to break down dirt and grime then wash it clean away. The coating is totally integrated into the surface of the glass and is highly durable. However, as with all coated glass, a certain level of care must be exercised when handling and maintaining Conservaglass. Conservaglass SB features Pilkington Activ Blue whilst Conservaglass NC features Pilkington Active Neutral.

Labels

- If any labels are still attached to the glass carefully peel them off.
- Care must be exercised when removing the label from the glass to ensure that the special coating is not damaged. Do not use a razor, scraper or wire-wool to detach the label.

Activation of the self-cleaning function

- During the week after initial installation the self-cleaning property will be progressively activated, triggered by exposure to UV light.
- The length of time required to activate the coating by UV rays can vary depending on the season and the orientation of the glass, but is normally within a week.
- When the glass is wet a small border of water droplets may appear around the perimeter surface of the glass. This is perfectly normal.

Cleaning for the first time

- Wait at least a week before cleaning the product for the first time to ensure all sealants used in its installation are fully set.
- Start with a rinse or hose-down with clean water and continue, when necessary, with the normal maintenance routines (see below). When hosing, start at the top and zig-zag to the bottom. Spray at the coolest part of the day and not in direct sunlight.

Normal maintenance

Conservaglass has a special property which means that the glass stays cleaner for longer than normal glass. The more exposure the product has to both sun and rain, the cleaner it will stay, for longer. However, a number of other factors affect the time it takes for a mark to be naturally removed, such as the level of ambient pollution, atmospheric conditions (e.g. long periods without rain), orientation of the conservatory, sloping or vertical use of Conservaglass etc.

Conservaglass is not a '100% maintenance-free' product. Should the glass require occasional cleaning, ensure that only the following are used:

- A soft, clean lint-free cloth or chamois leather
- Or a clean, soft non-abrasive sponge
- Or a clean, non-metal window squeegee

All equipment must be kept clean. This is to prevent any dirt or abrasive particles transferring from the equipment back onto the glass which may scratch or damage the coating. After cleaning, re-activation of the coating may take 5-7 days.

Cleaning products

- Clean water will normally suffice. Standard supermarket mild glass cleaning products can also be used such as Mr Muscle Window Cleaner or Windowlene Wipes for glass/shiny surfaces.
- 'Soft' water is best for cleaning glass. In hard-water areas a small amount of washing-up liquid can be used to soften water.

Important

- Do not use any glass treatment products containing silicones or abrasive particles.
- Do not use any commercial cleaning products which are intended specifically for cleaning elements other than glass.
- Do not use chemical products: soda, bleach, washing powder, white spirit, etc.
- Avoid contact with all sharp or abrasive objects including jewellery, buckles, tape measures, razor blades, Stanley knives, scouring pads, steel wool, sandpaper, etc.
- Never attempt to clean off a specific mark on the surface of Conservaglass without applying water first.

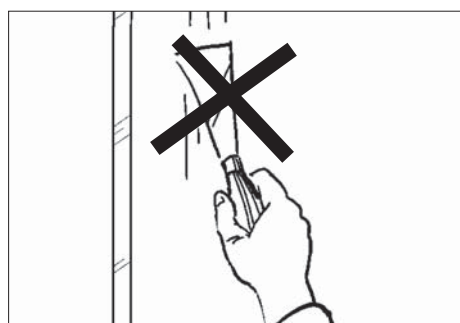
Protection during adjacent building/maintenance work

If any other works are taking place in the vicinity of Conservaglass then protect the glass with a clean plastic sheet to prevent any splashes or staining from aggressive compounds (paint, varnish, glue, sealant, cement, plaster, mortar, etc). This will also protect the product from abrasive or hot particles (grinding or welding sparks, etc). In the event of contamination, consult the websites listed on the back page of this leaflet for detailed advice on how to remove the offending stain.

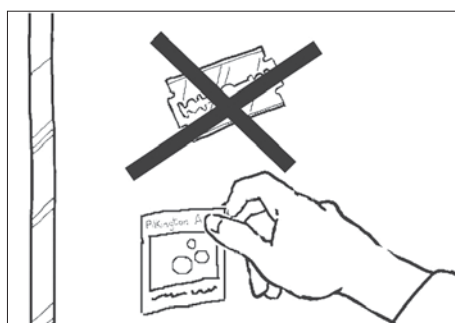
Important

Please retain these instructions for future reference. These instructions must be made known to anyone coming into contact with Conservaglass e.g. your window cleaner.

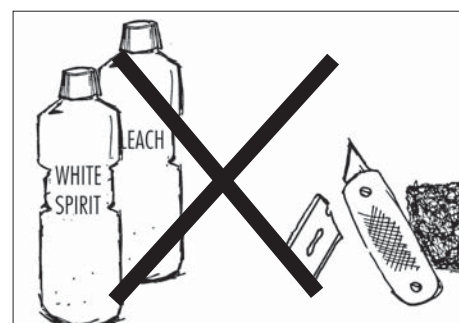
What NOT to do...



Avoid all contact with metal objects.



Do not use blades or knives when removing 'Bioclean' or Pilkington Activ' labels.



Avoid the use of all aggressive chemicals and abrasive/equipment/tools.



Conservatories



Orangeries



Extensions

Important Note for Homeowner

Please retain this leaflet for future reference. These instructions must be made known to anyone coming in to contact with Conservaglass - e.g. your window cleaner. For further information and up to the minute updates please visit: www.pilkington.com/en-gb/uk/householders/types-of-glass/self-cleaning-glass