

Ultrarroof Radius End Flashing

The complete guide to installing radius end flashing onto an Ultrarroof.

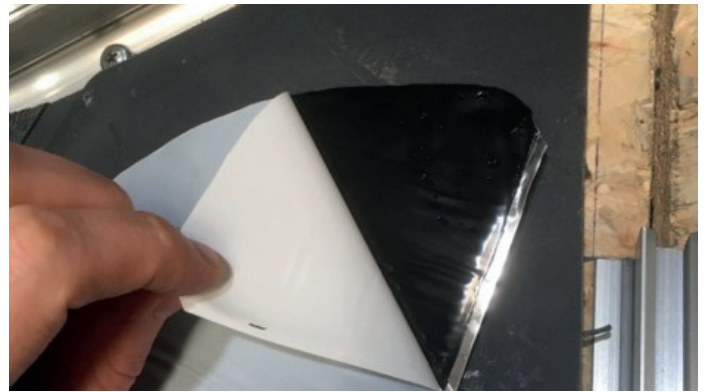
PLEASE READ BEFORE FITTING

The flashing is supplied in three colours:

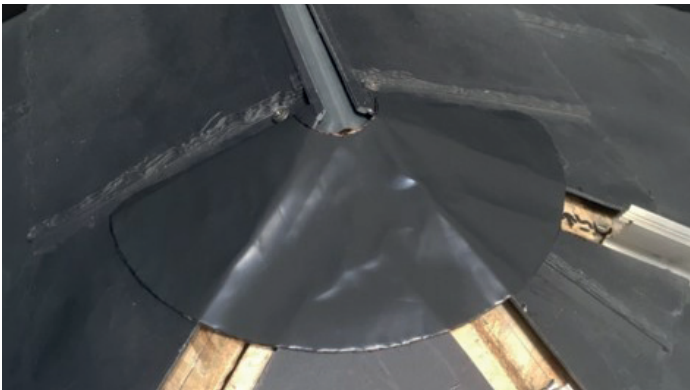
- **WPEF001MGR – Grey**
- **WPEF002MTS – Red**
- **WPEF002MHS – Brown**



Dry fit the ridge cap with radius end cover and position radius end flashing to create a consistent apron offset. Mark the position before removing the ridge cap.



Peel off the self adhesive backing (grey only).



Mould and adhere in position on top of the tiles as shown (no adhesive required for red and brown flashings).



Appearance of the finished installation.