

V4 | June 2022

ULTRASKY FLAT SKYLIGHT INSTALLATION GUIDE

Dear Customer,

Thank you for choosing the Ultraskey Flat Skylight product. This guide is designed to make fitting as straightforward as possible. **Before you commence installation of the skylight, please take a moment to read this guide.**

This guide is written on the basis that a qualified surveyor has undertaken correct checks for the capability / structural performance of any existing framework / walls / foundations to verify they are fit for purpose.

Please contact the Tech Support Team on **01200 452 918** or email **techsupport@ultraframe.co.uk**

IMPORTANT NOTES

- Take care when opening package.
- Always wear appropriate PPE when handling glass; Cut level 5 gloves, cut resistant sleeves, eye protection.
- Ensure the skylight is fitted in the correct sequence and orientation.
- Check that the up stand is square by measuring diagonals.
- Larger units will require multiple persons to lift.
- Not suitable to walk on the glass.
- Inner panes must be laminated in applications more than 5 metres above floor level*
- All sizes of the flat skylight exceeds building regulations. Please refer to the Thermal Design Guide in Udesign for a confirmed U-value of each product.

The Flat Skylight product is designed to meet the current British Standards for overhead glass installed less than 5m above the finished floor level, however is not designed to be walked on. The Standards state that inner panes on overhead glass units must be laminated in applications more than 5 metres above floor level (which is increased to 13 metres in limited circumstances) or are located over a body of water (such as swimming pools). However, the use of toughened inner glass panes in other applications below 5m above the finished floor level is permitted in the standard, although a risk assessment should be carried out and confirmation provided that this does not present additional risk to those below the rooflight.

ASSEMBLIES & PARTS INCLUDED



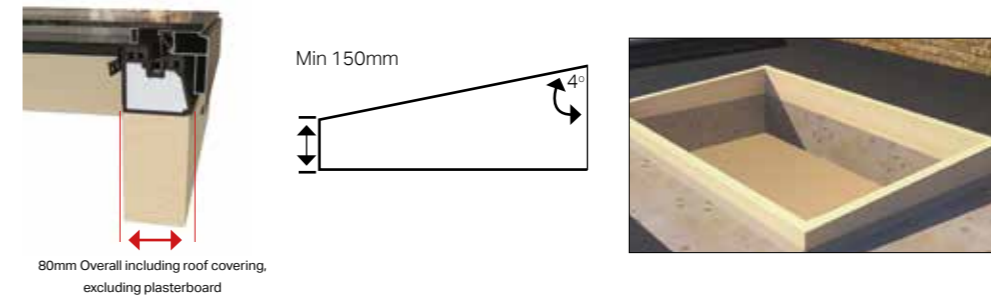
Surplus fasteners may be supplied in some instances but do not require fitting.

TOOLS REQUIRED



KERB INSTALLATION

Kerb construction rules



Construct the up stand to flat roof and fit roof covering.

NOTE: Measure diagonal corners to check sizes

ROOF COVERINGS KERB

Guidance only, always consult your roof covering supplier prior to fitting.

Membrane:

Option 1 Lap membrane over the top of the kerb ensuring that a watertight finish is achieved.

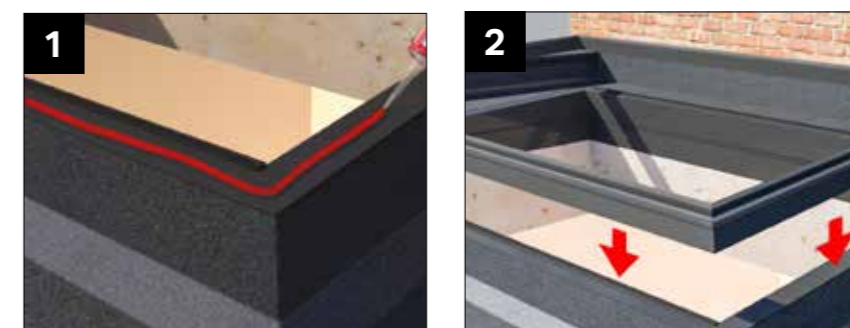
Option 2 Wrap the membrane up to the top face of the kerb, knife flush and fix using sealant/adhesive - ensuring that a watertight finish is achieved.

Post Skylight Installation: Roof coverings can be applied before or after the skylight is installed. When applying roof covering after the skylight it must be wedged behind the aluminum frame.

Fibreglass



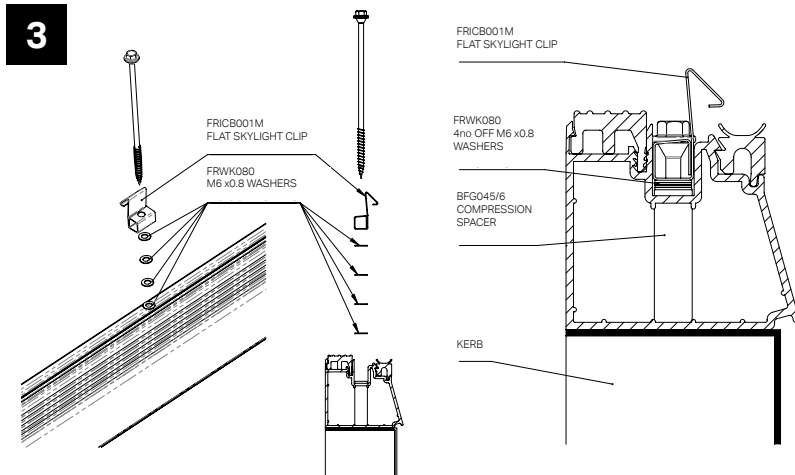
FLAT SKYLIGHT INSTALLATION



Apply a generous, continuous bead of silicone to the top surface of the kerb as shown.

Position PVCu welded base frame and align with internal kerb face.

FLAT SKYLIGHT INSTALLATION



For use when installing a flat skylight with 6-16-6 glazing.

Ensure that 4 washers (FRWA080) are installed below all flat skylight clips (fricb001m). This lifts the clip position for optimal engagement. Each clip will require 4 washers. Please note:- FRWK080 includes 80 washers, surplus washers are to be expected.

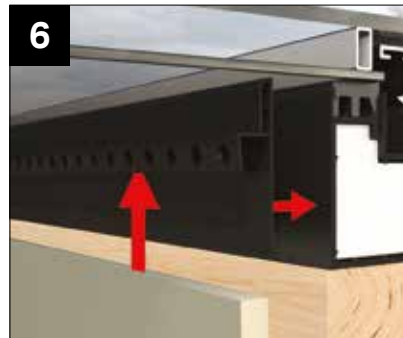
*Before fitting all the clips, please look at the section below about fitting the washers.



Firstly check that all aluminium spacer sleeves are in place in the fixing holes. Ensure you use all the clips provided. Position clips (FRICB001M) into location holes and fix using the provided (FRFC008-100) 100mm long screw.



Fit the top glass frame onto the PVCu frame. Carefully lower into position and then apply downwards pressure to opposite sides to activate clips locking feature. (You will hear a click). **NOTE: Larger units will require multiple persons to lift.**



Plasterboard trim fitting - **OPTION ONE** - Fit to edge of plasterboard and then fix plasterboard appropriately. **OPTION TWO** - Position as shown and then fix; using a countersunk screw and adhesive (not supplied) and then fit plasterboard. **NOTE: Top edge to be flush with internal glass.**



INSTALLATION IS COMPLETE

www.ultraframetrade.co.uk

Ultraframe[®]
Transforming light and space

Job No.: 3902 06/22 V4 FRIG001

It is Ultraframe's policy to continually seek to improve its products, processes and services, and we reserve the right to change specifications without prior notice. Ultraframe is a trading name of Ultraframe (UK) Limited.